

# Yorkshire Museum

## Discover: Viking North Teachers' Workshop Pack



**Image:** A Viking pendant fashioned in the shape of a longboat. © York Museums Trust (Yorkshire Museum).

Email: [schools@ymt.org.uk](mailto:schools@ymt.org.uk)

## Workshop overview

Voyage into the past in our **Discover: Viking North** workshop! Explore the museum and handle real objects from our collections to uncover the lives of Viking warriors, traders and craftsmen in the north of England. Afterwards, try your hand at a popular Viking board game or create your own piece of Scandinavian jewellery.

## Location

The Yorkshire Museum  
Museum Gardens  
Museum Street  
York  
YO1 7FR

## Workshop times

10am-12pm or 12.30-2.30pm.

## Age group

Key Stage Two.

## Numbers

Maximum group size of 34 pupils per workshop.

We can accommodate up to two groups from your school on a single day, with a maximum of 30 pupils per workshop (60 pupils in total).

## Session fees

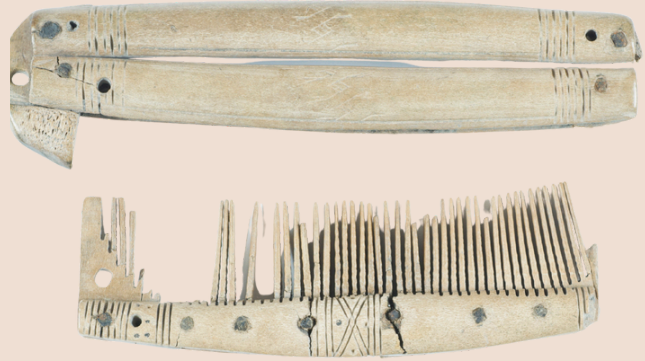
£7 per pupil. For groups of 22 or less, there is a flat fee of £154 per workshop.

This includes entry to the Yorkshire Museum should you wish to make a self-guided visit before or after your workshop.

## What to expect

During this session, pupils will:

- **Explore** our Viking North exhibition by completing two discovery challenges. These will give pupils an insight into the Danelaw's connections to the wider Viking world and the everyday lives of Viking warriors, traders and craftsmen in the north of England.



**Image:** Making decorated bone combs and cases was an important trade in Viking York. © York Museums Trust (Yorkshire Museum).

- Get **hands-on** with some real Viking artefacts using one of our Viking object boxes, which will shed light on life in one of Viking Great Army's camps (**Life in the Viking Great Army**) or the livelihood and beliefs of those who lived in the Danelaw (**Life in the Danelaw**).
- Learn through **play** by learning the rules to a popular Viking board game (**Hnafetafl**) or by creating your own Scandinavian brooch using clay (**Jellinge style jewellery**).

Our **Discover: Viking North** workshop is led by an expert member of our Learning Team.

You can select which Viking object box (**Life in the Viking Great Army** or **Life in the Danelaw**) and play-based activity (**Hnefatafl** or **Jellinge style jewellery**) you would like us to deliver as part of your workshop during the booking process.

## Risk assessment

You will be sent a copy of our **Discover: Viking North Workshop Risk Assessment** once a booking has been made.



Image: Exploring the Viking North exhibition, courtesy of York Museums Trust.

## Curriculum links

Our **Discover: Viking North** workshop can be used to cover the following curriculum areas:

### Key Stage Two

Pupils should be taught about:

- The Viking and Anglo-Saxon struggle for the Kingdom of England to the time of Edward the Confessor

This could include:

- Viking raids and invasion
  - Resistance by Alfred the Great and Athelstan, first king of England
  - Further Viking invasions and Danegeld
- A local history study



**Image:** The Coppergate Helmet. This finely decorated Anglo-Saxon helmet was hidden shortly before the Viking attack on York in AD 865. © York Museums Trust (Yorkshire Museum).

## Workshop outline A (single class of up to 34 pupils)

| Time                              | Activity   | Location                           |
|-----------------------------------|--|------------------------------------|
| 10-10.40am/<br>12.30-<br>1.10pm   | <p>Arrival at the Yorkshire Museum. Pupils will store their belongings and receive a welcome briefing from the session lead.</p> <p>Pupils will discover the origins of the Danelaw through an interactive <b>map activity</b>.</p>  | The Rec Room and The Discovery Den |
| 10.40-<br>11.10am/<br>1.10-1.40pm | <p>Pupils will split into two groups and <b>explore</b> our Viking North exhibition whilst alternating between the following activities:</p> <p><b>The Viking World</b><br/>Pupils must track down eight star objects which show the connections between the Danelaw and the wider Viking world.</p> <p><b>Who were the Vikings?</b><br/>Pupils must hunt for eight star objects which can tell us stories about the Vikings as raiders, makers, traders and believers.</p>  | Viking North                       |
| 11.10-<br>11.30am/<br>1.40-2pm    | <p>Pupils will get <b>hands-on</b> with history using one of our two Viking object boxes. You can choose between:</p> <p><b>Life in the Viking Great Army</b><br/>This box uses a digital model and objects from our collections to give pupils an insight into what it was like to live in the Viking Great Army camp at Aldwark.</p> <p><b>Life in the Danelaw</b><br/>This box contains objects from our collections which provide evidence for the livelihood and beliefs of the people who lived in the Viking north.</p> | The Discovery Den                  |



| Time                         | Activity   | Location          |
|------------------------------|--|-------------------|
| 11.30-11.50am/<br>2-2.20pm   | <p>Pupils will complete one of two <b>play-based</b> activities. You can choose between:</p> <p><b>Hnefatafl</b><br/>Pupils will get an insight into popular pastimes by learning how to play a Viking board game.</p> <p><b>Jellinge style jewellery</b><br/>Pupils will use clay to make their own piece of Scandinavian jewellery based on examples on display at the Yorkshire Museum.</p> | The Discovery Den |
| 11.50am-12pm/<br>2.20-2.30pm | Plenary and evaluation   | The Discovery Den |

Your preferred **object box** and **play-based** activity can be selected during the booking process.



**Image:** A Viking grave cover which depicts the mythical Scandinavian hero Sigurd slaying the dragon Fafnir. © York Museums Trust (Yorkshire Museum).

### Workshop outline B (two classes of up to 60 pupils in total)

| Group One   | Group Two  |
|---|--|
| Both groups arrive at the Yorkshire Museum (10am)           |  |
| Discover: Viking North Workshop<br>(10am-12pm)              | Self-guided visit to the Yorkshire Museum<br>(10am-12pm) |
| Self-guided visit to the Yorkshire Museum<br>(12pm-12.30pm) | Lunch (12pm-12:30pm)                                     |
| Lunch (12.30pm-1pm)   | Discover: Viking North Workshop<br>(12.30-2.30pm)        |
| Self-guided visit to the Yorkshire Museum<br>(1pm-2.30pm)   |  |
| Both groups depart the Yorkshire Museum (2.30pm)            |  |

### Cancellation Policy

If you need to cancel your workshop booking, then please give us as much notice as possible so that we can offer your slot to another group.

If a booking is cancelled less than one week before your visit date, then your school will be charged a cancellation fee amounting to 50% of the visit fee.

If a booking is cancelled less than 24 hours before your visit date, then your school will be charged a cancellation fee amounting to 100% of the visit fee.

### Key vocabulary

Evidence, Viking, Scandinavia, pagan, monastery, Danelaw, hoard, trade, trader, merchant, dirham, hacksilver, conversion, Jellinge style, Borre style.

## Get in touch!

If you require further information about our **Discover: Viking North** workshop, or making a visit to the Yorkshire Museum, then please get in touch with our Learning Team at [schools@ymt.org.uk](mailto:schools@ymt.org.uk) or call **01904 650348**.



**Image:** Exploring Roman arms and armour at the Yorkshire Museum. © Photo by Gareth Buddo, courtesy of York Museums Trust.

The Yorkshire Museum is part of York Museums Trust. Charity number 1092466.