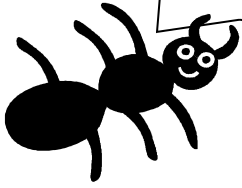


Museum Gardens Minibeast Trail.

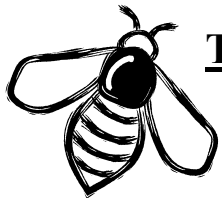
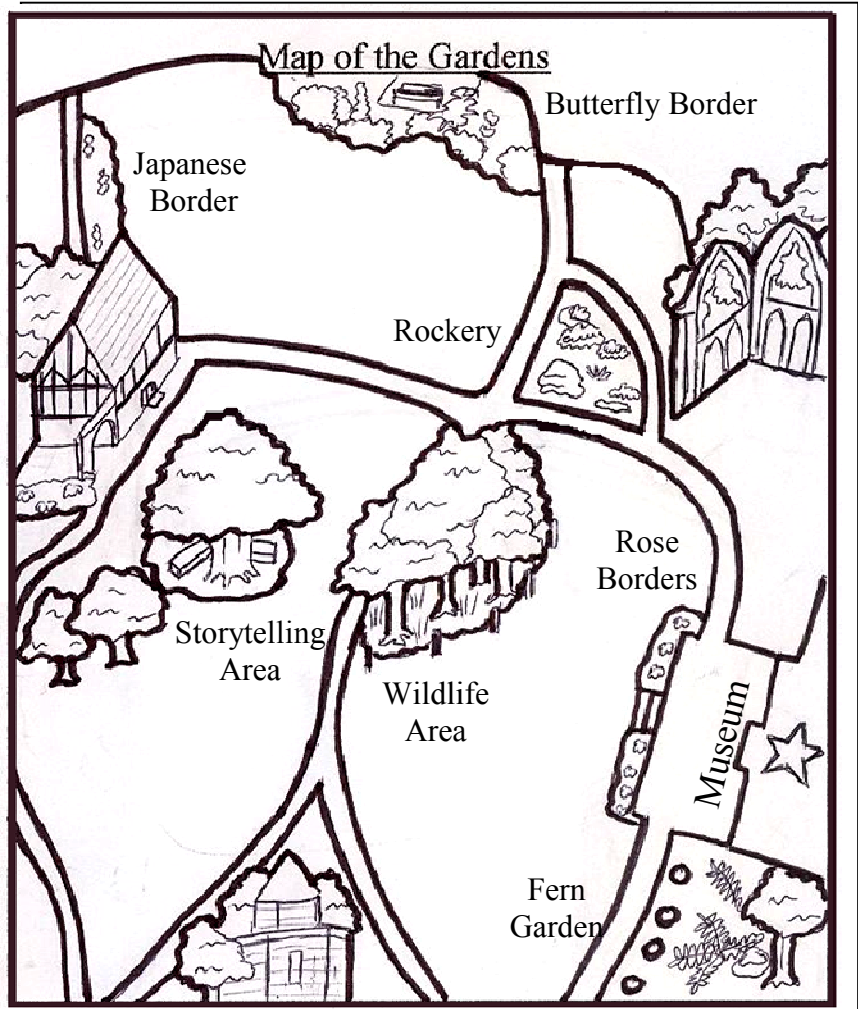
As you explore the gardens don't forget the plants are our home, so try not to step on them!



Do you have your plastic cup? Do you have a pencil? Do you have an adult with you? Then you're ready to start exploring! You could also buy a magnifying glass from the Museum shop so you can see the really tiny insects.

Follow the map to these different areas and see what you find there.

As you come out of the Museum turn right, towards the ruins, and you'll find our first stop...The Rockery!



The Rockery

Can you see the bright yellow plant? It's called Hypericum. Bees love this plant: can you see any?

The bees fly towards flowers that are bright and colourful and that smell nice! They feed on nectar from the flowers then take it back to the hive to make honey.

Honey bees are the only insects that produce food for humans.

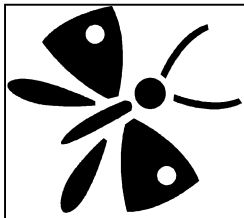
They visit about 2 million flowers to make just 500 grams of honey!

Draw some of the flowers that you can see in these boxes!

Ants love cracks and crevices so they love the stones in the rockery. Can you find any crawling about? Draw what you find here.

Beating!

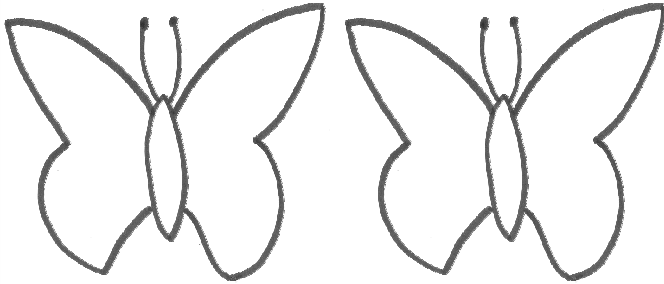
Lots of insects live in or around trees. To collect some put this sheet underneath the tree and then try shaking a branch or tapping it with a stick. The insects will fall onto the sheet! You will probably find lots of aphids: tiny, green insects that live by sucking sap from leaves.



The Butterfly Border

The colourful flowers in the border attract butterflies and bees!

Many different species of butterfly visit the garden. Draw on the patterns of any butterflies that you see here, or at home in your own garden!



Can you spot the nettles at the back of the garden?

Butterflies depend on nettles for the growth of their larvae.

What colour are most of the flowers in this border?
Do they all smell the same?

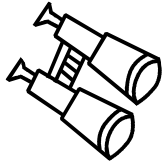
Butterflies can fly as fast as 12 miles per hour!

How big is the biggest Butterfly in the world?

- A) As big as this box.
- B) As big as your hand.
- C) As big as this sheet of paper.

Answer: C. The biggest is 12 inches!

The Wildlife Area



Lay down on the grass and look into the wildlife patch: imagine being as small as an insect!

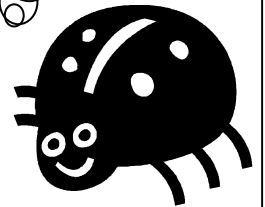
You'll have to look extra hard as insects can be well camouflaged.



Some moths are patterned like leaves or the bark of trees so that they cannot be seen!

The Hawk Moth is the world's fastest flying insect—it can reach speeds of over 30 miles per hour!

Why not take a rest in the Storytelling Circle and draw some of the insects you have seen so far in these boxes!



Fern Garden



The Fern Garden is dark and damp, woodlice, worms, centipedes, snails and slugs love this environment. Try lifting up a stone or a small log and see if you can find anything!

Find an insect and write about its behaviour, what is it doing, and where is it going?

TRUE OR FALSE?

Slugs and snails do not have eyes.

Answer: False. They do have eyes, on the end of their tentacles.

There are over 3,000 species of woodlice in the world!

Woodlice breathe through gills, like a fish does!

Did you know? Slugs have green blood!



Before you go home make sure you put us back where you found us!

